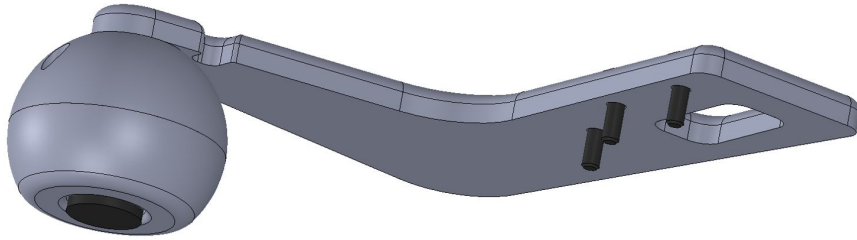


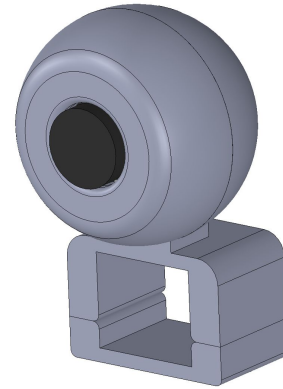
# Stretch RE1 Teleop Kit Build

Rev 4.2022



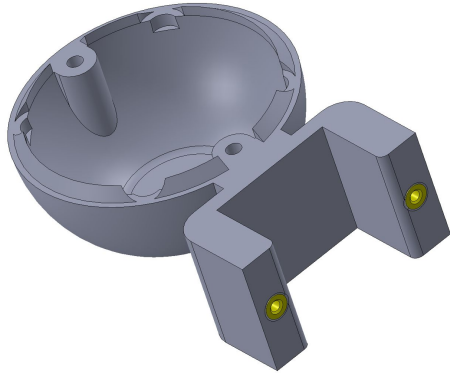


Head camera  
module



Gripper camera  
module

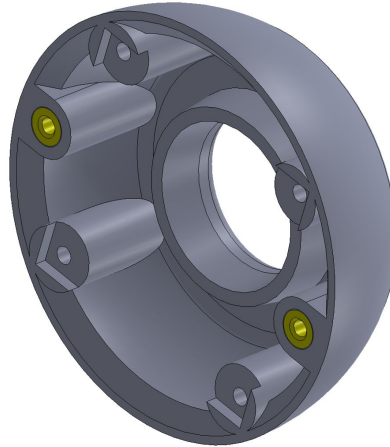
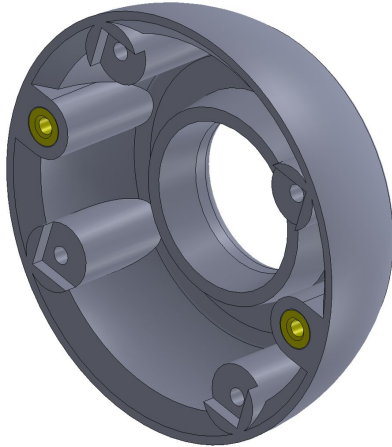
Hello Robot Part No	Vendor	Vendor Link	Vendor Part No	Qty	Notes
3DP-810_Head_Teleop_Mount	Hello Robot / Customer	N/A	3DP-810_Head_Teleop_Mount	1	3D printed PLA
3DP-808_Teleop_Camera_Mount_Front	Hello Robot / Customer	N/A	3DP-808_Teleop_Camera_Mount_Front	2	3D printed PLA
3DP-809_Head_Teleop_Mount_Back	Hello Robot / Customer	N/A	3DP-809_Head_Teleop_Mount_Back	1	3D printed PLA
3DP-812_Gripper_Teleop_Mount_Bottom	Hello Robot / Customer	N/A	3DP-812_Gripper_Teleop_Mount_Bottom	1	3D printed PLA
3DP-811_Gripper_Teleop_Mount_Back	Hello Robot / Customer	N/A	3DP-811_Gripper_Teleop_Mount_Back	1	3D printed PLA
HDW-205_96817A268_M2.5x8mm_Thread_Forming	McMaster	<a href="https://www.mcmaster.com/96817A268/">https://www.mcmaster.com/96817A268/</a>	96817A268	8	
HDW-211_94180A321_M2.5x3.4mm_Heat_Set_Insert	McMaster	<a href="https://www.mcmaster.com/94180A321">https://www.mcmaster.com/94180A321</a>	94180A321	6	
HDW-316_91290A103_M2.5x10mm_SHCS	McMaster	<a href="https://www.mcmaster.com/91290A103">https://www.mcmaster.com/91290A103</a>	91290A103	6	
HDW-267_91239A140_M4x8mm_BHCS	McMaster	<a href="https://www.mcmaster.com/91239A140">https://www.mcmaster.com/91239A140</a>	91239A140	1	
HDW-330_94180A351_M4x4.7mm_HEAT-SET INSERT	McMaster	<a href="https://www.mcmaster.com/94180A351">https://www.mcmaster.com/94180A351</a>	94180A351	1	
HDW-802_91239A149_M4x14mm_BHCS_Black_Ox_Hex	McMaster	<a href="https://www.mcmaster.com/91239A149">https://www.mcmaster.com/91239A149</a>	91239A149	3	
ELE-801_Spine_UC20MPE_F185_camera	Spinell	<a href="https://store.spinelectronics.com/UC20MPE_F185">https://store.spinelectronics.com/UC20MPE_F185</a>	UC20MPE_F185	2	
CBL-701-USB_Teleop_Head	Hello Robot / Customer	N/A	CBL-701-USB_Teleop_Head	1	Custom USB A-JST ZH. Contact Hello Robot for details.
CBL-702-USB_Teleop_Wrist	Hello Robot / Customer	N/A	CBL-702-USB_Teleop_Wrist	1	Custom USB A-JST ZH. Contact Hello Robot for details.



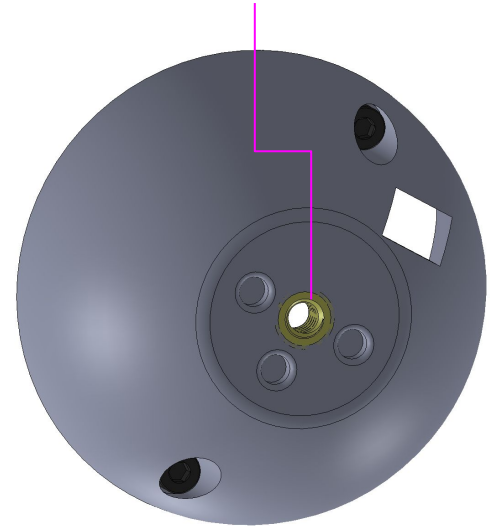
Use a soldering iron to install the  
heat set inserts into the 4 PLA parts  
as shown

HDW-211\_94180A321\_M2.5  
x3.4mm\_Heat\_Set\_Insert

(x6)

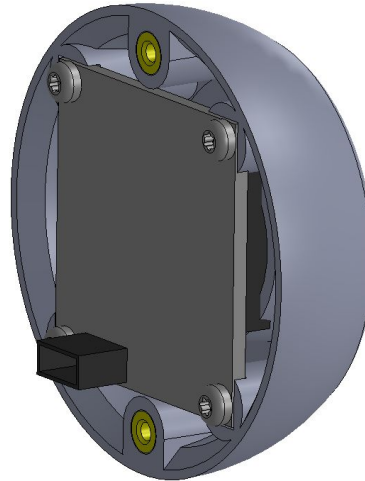
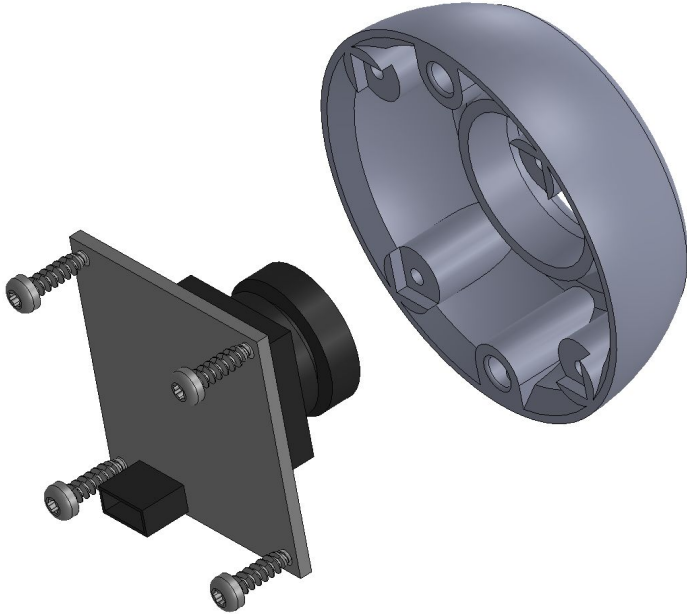


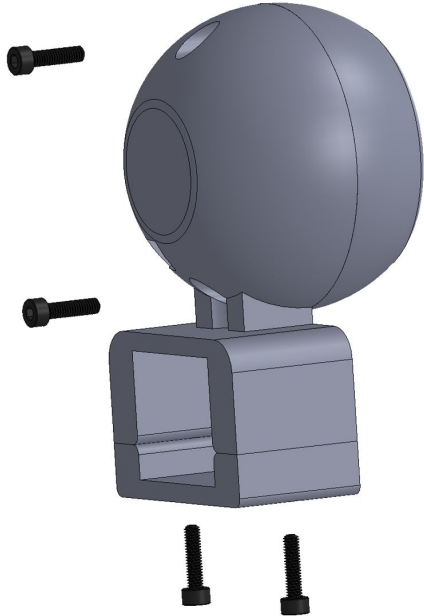
HDW-330\_94180A351\_M4x4.7  
mm\_HEAT-SET INSERT



Install cameras using 8x self  
threading screws

Build 2 modules as shown





## Wrist module

Attach CBL-702-USB\_Teleop\_Wrist to camera

Assemble wrist module as shown using x4  
M2.5x10mm SHCS bolts



## Wrist module

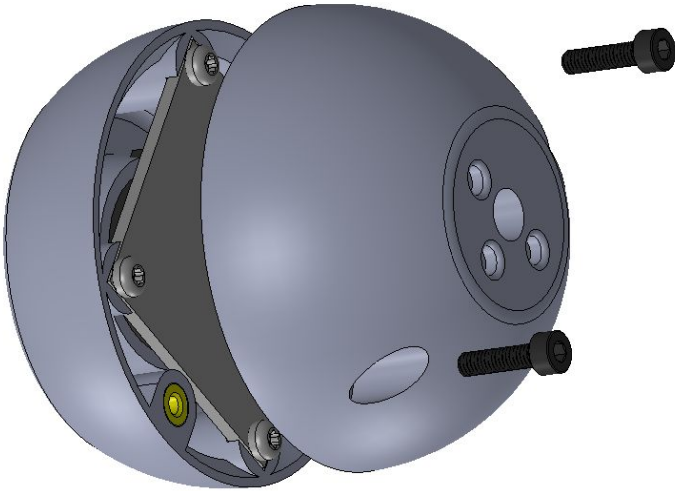
Clamp camera module to end of gripper as shown.

Connect USB-A of cable to RE1 wrist USB-A port

## Head module

Attach CBL-701-USB\_Teleop\_Head to camera

Assemble head camera module using 2x M2.5x10mm  
SHCS bolts as shown







## Head module

Attach the camera to the mount plate using M4x8mm BHCS

Attach the mount plate to the RE1 head using 3x M4x15mm BHCS

Plug USB-A of camera cable into head USB-A port

